



BEVERAGE MENU



Step into the enchanting world of 1918 Heritage Bar, where the classic beauty of The Alkaff Mansion merges with a nostalgic ambiance, paying tribute to the year the mansion was built and its rich heritage and culture. Revel in familiar flavours and spices once traded by the esteemed Alkaff family as you indulge in a thoughtfully curated selection of beverages, including signature cocktails named after significant events tied to the mansion's history.

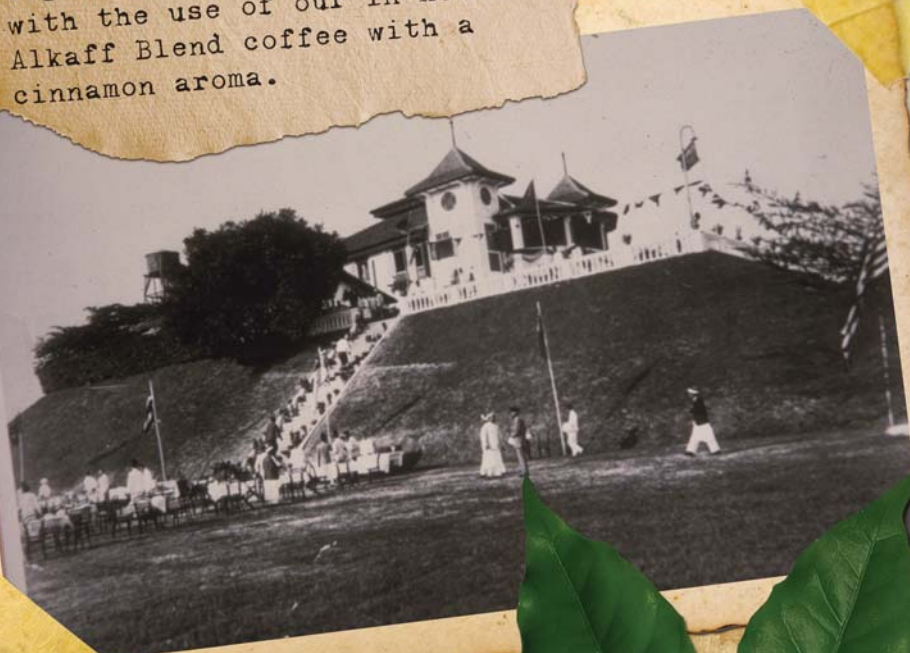
1918 Heritage Bar presents a captivating atmosphere that seamlessly blends vintage aesthetics with modern flair, offering a truly unique and memorable experience.



SIGNATURE COCKTAILS



The Alkaffs were a wealthy and prominent family of merchants and property developers who owned holiday houses in Singapore, including The Alkaff Mansion. As they were traders in spices, coffee and sugar, this inspired the beginning of our concoctions with the use of our in-house Alkaff Blend coffee with a cinnamon aroma.



SINGAPORE TOURIST PROMOTION BOARD COLLECTION,
COURTESY OF NATIONAL ARCHIVES OF SINGAPORE



Coffee beans were
 The roasted beans
 manual hand-cr
 brewed using metho
 water was forced up
 ground coffee repeate
 achieved. Another commo
 coffee grounds directl
 slight prepare a pot of



FORTUNE ARISE

1900s



Sauza Silver Tequila | Alkaff Blend Espresso
Kahlua | Agave Cinnamon | Chocolate Bitters

Taste Notes:
Creamy, Sweet, Earthy

\$20

ALL PRICES ARE SUBJECTED TO 10% SERVICE CHARGE AND PREVAILING GOVERNMENT TAXES.

You are cordially invited to



...ent, from Greek
... is a genus of
... family Lamiaceae (mint
... species is
... where
... and
... known.

... across
... Asia,
... South
... many
... in wet
... soils.



© SINGAPORE TOURIST PROMOTION BOARD COLLECTION,
COURTESY OF NATIONAL ARCHIVES OF SINGAPORE

Throughout the 1920s, The Alkaff Mansion with its vast and open courtyards, hosted many high society parties and press conferences with people of various races and social classes. Such significant events and celebrations inspired a glitter and sparkling cocktail with an aromatic mint blending with local flavours of calamansi and sour plum.



GARDEN PARTY

1920s



Sipsmith Gin | Apple | Calamansi
Sour Plum | Soda

Taste Notes:
Sweet, Refreshing, Sour

\$20

ALL PRICES ARE SUBJECTED TO 10% SERVICE CHARGE AND PREVAILING GOVERNMENT TAXES.

Hordeum vulgare), a member of the family, is a major cereal grain grown in late climates globally. It was one of the cultivated grains, particularly in Asia as early as 10,000 years ago. Globally, barley production is used as animal feed, while 30% as a source of fermentable material for beer and certain distilled beverages, and as a component of various animal feeds. It is used in soups and stews, and in barley bread in various cultures.



ALKAFF GARDENS, SINGAPORE
© LIM KHENG CHYE COLLECTION,
COURTESY OF NATIONAL ARCHIVES OF SINGAPORE

Apart from The Alkaff Mansion, the family had owned multiple properties across the island including the Alkaff Lake Gardens. This Japanese-styled garden was the first of its kind to be built in Singapore and became a place of attraction with its landscaped paths. With miso being a key Japanese ingredient, this was incorporated with a blend of Midori Melon for that umami taste.

MIZUMI

1930s



Suntory Haku Vodka
Midori Melon Liqueur | Miso | Lime

Taste Notes:
Savoury, Umami, Complex

\$20

ALL PRICES ARE SUBJECTED TO 10% SERVICE CHARGE AND PREVAILING GOVERNMENT TAXES.



Since the construction of the mansion, it has been a gathering place for notable society members. From a weekend house filled with leisure parties to official state events and conferences, and further redevelopment into various European restaurants. A place of unity and rich history which inspired the blend of French and Spanish-based alcohol with condiments that compliment and enhances its taste.



© SINGAPORE TOURIST PROMOTION BOARD COLLECTION,
COURTESY OF NATIONAL ARCHIVES OF SINGAPORE



Alkaff Mansion is an early 20th-century colonial bungalow located within the Elok Blangah Hill Park in Singapore. The hill was originally called Mt Washington, and was part of a sprawling land estate owned by a British merchant, Sir Raffles, in the 19th century. The mansion at the bungalow was built in 1901, which was abandoned during the War. The property was later acquired by the government.

EURO-CONNECTION

1990s



Courvoisier VSOP | Gramona Vie De Glass
Honey | Lemon | Almond

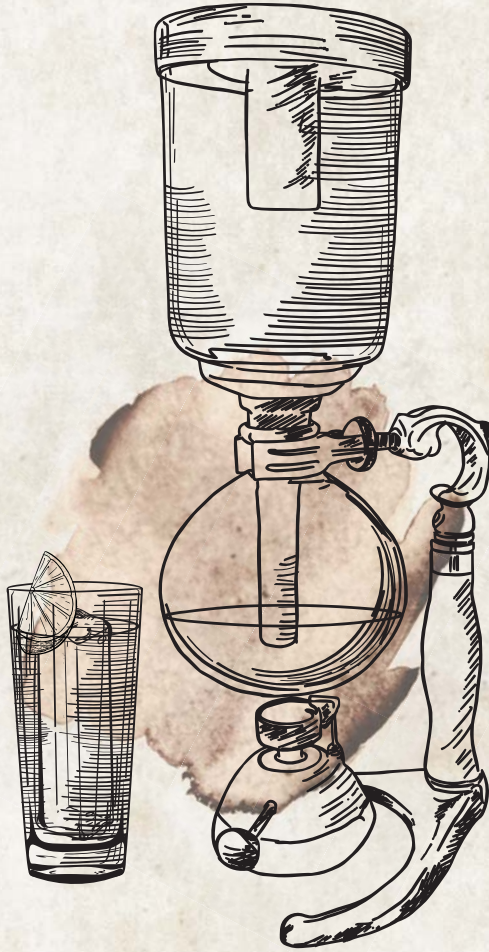
Taste Notes:
Nutty, Sweet, Bold

\$20

ALL PRICES ARE SUBJECTED TO 10% SERVICE CHARGE AND PREVAILING GOVERNMENT TAXES.

ALKEMY

(NITRO-INFUSED)



Fernet Branca | Coca Cola
Lime | Vanilla | Herbs Infusion

\$22

ALL PRICES ARE SUBJECTED TO 10% SERVICE CHARGE AND PREVAILING GOVERNMENT TAXES.

BACK IN THYME

(EDIBLE COCKTAIL)



Sipsmith Gin | Thyme | Lime

\$22

ALL PRICES ARE SUBJECTED TO 10% SERVICE CHARGE AND PREVAILING GOVERNMENT TAXES.

SMOKE & SPICE

(TORCHED)

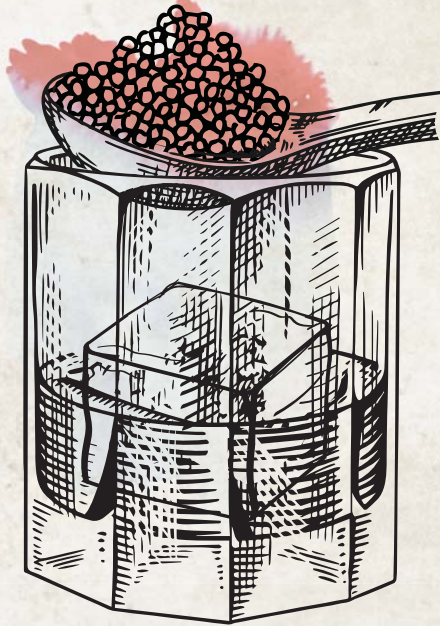


Sailor Jerry Rum | Lime | Thyme | Cinnamon

\$22

ALL PRICES ARE SUBJECTED TO 10% SERVICE CHARGE AND PREVAILING GOVERNMENT TAXES.

PISCO POP



Barsol Pisco | Chambord | Lime
Rosemary | Elderflower Caviar

\$22

ALL PRICES ARE SUBJECTED TO 10% SERVICE CHARGE AND PREVAILING GOVERNMENT TAXES.



CLASSIC COCKTAILS



TWISTED

CLASSIC COCKTAILS

Cosmopolitan

\$19

Suntory Haku Vodka | Triple Sec
Cranberry | Lime | Cardamom | Mint

Gimlet

\$19

Sipsmith Gin | Benedictine DOM
Lime | Lemongrass

Matcharita

\$19

Sauza Silver Tequila | Triple Sec
Cherry Brandy | Matcha | Yuzu

Sangria

\$19

Pierre Jean Merlot | Bacardi White Rum
Crème De Cassis | Orange | Berry Mix

CLASSIC COCKTAILS

Singapore Sling	\$18
Sipsmith Gin Benedictine DOM Cherry Brandy Liqueur Triple Sec Pineapple Lime Grenadine	
Negroni	\$18
Sipsmith Gin Campari Martini Rosso	
Old Fashioned	\$18
Jim Beam Bourbon Angostura Sugar	
Mojito	\$18
Bacardi White Rum Lime Mint Soda	

ALL PRICES ARE SUBJECTED TO 10% SERVICE CHARGE AND PREVAILING GOVERNMENT TAXES.



OTHER BEVERAGES



ON TAP

ALCOHOL

- Earl Grey Gin & Tonic** \$18
Bombay Sapphire Gin | Earl Grey Liqueur |
Tonic | Soda
- Peach & Elderflower Spritz** \$18
Peach Schnapps | Elderflower Liqueur |
Cinzano Prosecco | Soda
- Apple Honey Whiskey** \$18
Johnnie Walker Red Label | Apple |
Honey | Soda
- Aperol Spritz** \$18
Aperol | Cinzano Prosecco | Soda

NON - ALCOHOL

- Nitro Coffee**  \$9
Alkaff Blend
- Kombucha**  \$9
Lychee Green Tea



Nutri-Grade is based on default
preparation (before addition of ice)

ALL PRICES ARE SUBJECTED TO 10% SERVICE CHARGE AND PREVAILING GOVERNMENT TAXES.

BEERS & CIDERS

DRAFT BEERS

Heineken	\$16
Tiger	\$16
Guinness	\$18
Estrella Galacia	\$18

BOTTLED BEERS/CIDERS

Asahi Super Dry Black	\$14
Corona Extra	\$14
Kirin Ichiban	\$14
Maeloc Pear	\$15
Maeloc Strawberry	\$15

SPIRITS

VODKA

Belvedere Pure	\$16 \$200
Grey Goose Original	\$250
Reyka	\$250

TEQUILA

Jose Cuervo Gold	\$16 \$200
Espolon Reposado	\$16 \$200
Don Julio Blanco	\$250
Patron Silver	\$250

SPIRITS

GIN

Hendricks	\$16 \$200
Roku	\$16 \$200
Monkey 47 Sloe	\$16 \$200
Tanglin Singapore Gin	\$16 \$200
Tanglin Black Powder	\$250
Tanqueray 10	\$250
Botanist	\$250
Poor Tom Strawberry	\$250

ALL PRICES ARE SUBJECTED TO 10% SERVICE CHARGE AND PREVAILING GOVERNMENT TAXES.

SPIRITS

BOURBON

Jack Daniel	\$16 \$200
Makers Mark	\$16 \$200
Bulleit 95 Rye	\$250

COGNAC

Hennessy VSOP	\$18 \$250
Martell VSOP	\$18 \$250
Martell Cordon Bleu	\$600

RUM

Sailor Jerry	\$16 \$200
Havana Bianco	\$16 \$200
Havana Reserva	\$16 \$200
Diplomatico Reserva	\$250

ALL PRICES ARE SUBJECTED TO 10% SERVICE CHARGE AND PREVAILING GOVERNMENT TAXES.

WHISKEY

Canadian Club Standard	\$16 \$200
Jameson Irish	\$16 \$200
Glenlivet 12	\$250
Chivas 18	\$250
Glenfiddich 12	\$250
Glenfiddich 18	\$450
Glenmorangie 10	\$16 \$200
Glenmorangie Lasanta	\$250

ALL PRICES ARE SUBJECTED TO 10% SERVICE CHARGE AND PREVAILING GOVERNMENT TAXES.

WHISKEY

Johnnie Walker Gold Label	\$18 \$250
Johnnie Walker Blue Label	\$600
Macallan 12 Double Cask	\$350
Macallan 15	\$450
Hibiki Harmony	\$350
Yamazaki 12	\$450

ALL PRICES ARE SUBJECTED TO 10% SERVICE CHARGE AND PREVAILING GOVERNMENT TAXES.

WINES

RED

La Rioja Alta Finca San Martin Crianza Rioja, Spain	21 105
Familia Torres 'San Valentin' Garnacha Catalunya, Spain	20 98
Pirramimma Stock's Hill Shiraz McLaren Vale, Australia	20 98
Toress Gran Coronas Reserva Cabernet Sauvignon Penedes, Spain	22 108
Tabali Pedregoso Grand Reserva Merlot Maipo Valley, Chile	21 100

SPARKLING WINE

Chandon Garden Spritz Mendoza, Argentina	\$20 \$95
Castellblanc Cava Brut Spain	\$17 \$100

WINES

WHITE

Lagar De Fornelos Lagar De Cervera Albarino Rioja, Spain	\$22 \$110
Pirramimma French Oak Chardonnay McLaren Vale, Australia	\$20 \$98
Miguel Torres Las Mulas Sauvignon Blanc Central Valley, Chile	\$19 \$90
Muga Blanco Rioja, Spain	\$21 \$100
Whispering Angel Rose Cotes De Provance, France	\$22 \$105
Cloudy Bay Sauvignon Blanc Marlborough, New Zealand	\$22 \$120

ALL PRICES ARE SUBJECTED TO 10% SERVICE CHARGE AND PREVAILING GOVERNMENT TAXES.

MOCKTAILS

Cucumber Cup

Lime | Cucumber | Simple Syrup | Soda

 12%
sugar \$12

Fresa Maria

Strawberry | Lime | Ginger Ale | Sprite

 12%
sugar \$12

Virgin Sangria

Pineapple | Orange | Berry Mix | Soda

 12%
sugar \$12

Virgin Mojito

Choice of Passionfruit / Mango / Lychee / Classic

Lime | Mint | Soda

 12%
sugar \$12



Nutri-Grade is based on default
preparation (before addition of ice)

ALL PRICES ARE SUBJECTED TO 10% SERVICE CHARGE AND PREVAILING GOVERNMENT TAXES.

OTHERS

Coke		\$6
Coke Light		\$6
Ginger Ale		\$6
Sprite		\$6
Double Dutch		\$8
Cucumber Watermelon		
Cranberry Ginger		
Pomegranate Basil		
Indian Tonic		
Skinny Tonic		
Fresh Juices		\$8
Apple		
Orange		
Calamansi		
Evian Still Water (750ml)		\$8
Evian Sparkling Water (750ml)		\$8



Nutri-Grade is based on default preparation (before addition of ice)

THE ALKAFF MANSION, 10 TELOK BLANGAH GREEN, SINGAPORE 109178
ENQUIRY@1918BAR.SG | 1918BAR.SG | f @ 1918BAR.SG